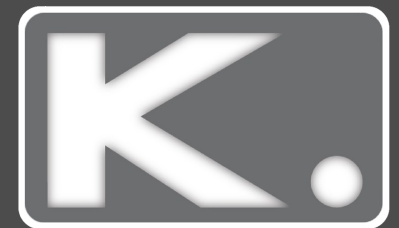
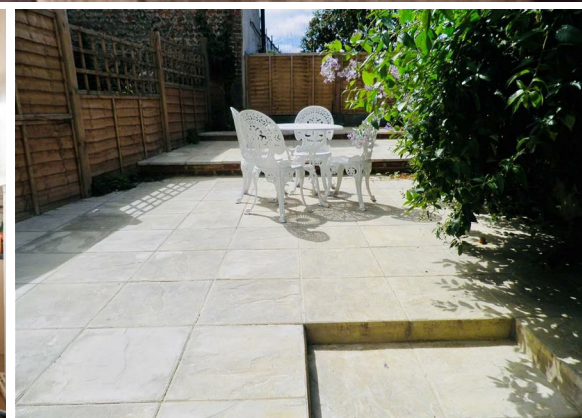




**6 Bed  
House - Terraced  
located in Brighton**

£3,640 PCM



106 Islingword Road  
Brighton  
East Sussex  
BN2 9SG

Kendrick Property Services are delighted to bring to the market a spacious 6 bedroom house in Brighton, ideal for students. The property is in a great central location on Islingword Road, in the popular Hanover area. The property is within easy walking distance to the beach, nearby shops and vibrant nightlife. The property consists of a open plan lounge and kitchen, 6 double bedrooms, 2 bathrooms and patio garden. Part Furnished (beds, desks, wardrobes, sofas).  
£130ppw (Bills Included G,E,W option available) Ava -  
29/08/2023



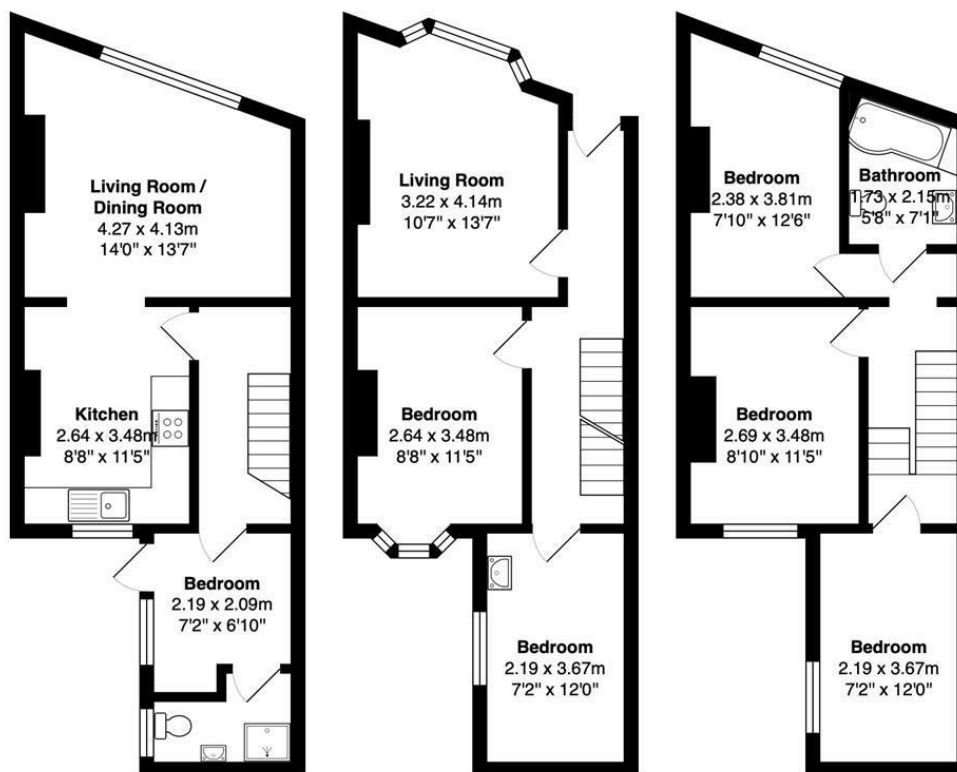




106 Islingword Road, Brighton, East Sussex, BN2 9SG



DIRECTIONS



**Lower Ground Floor**  
 Area: 38.7 m<sup>2</sup> ... 417 ft<sup>2</sup>

**Ground Floor**  
 Area: 39.4 m<sup>2</sup> ... 424 ft<sup>2</sup>

**First Floor**  
 Area: 38.7 m<sup>2</sup> ... 416 ft<sup>2</sup>

Total Area: 116.8 m<sup>2</sup> ... 1257 ft<sup>2</sup>

All measurements are approximate and for display purposes only.

CONTACT

Kendrick Property Services - Brighton  
 10-12 Lewes Road  
 Brighton  
 East Sussex  
 BN2 3HP  
 E:  
[lettings@kendrickpropertyservices.co.uk](mailto:lettings@kendrickpropertyservices.co.uk)  
 T: 01273 699600  
[www.kendrickpropertyservices.co.uk](http://www.kendrickpropertyservices.co.uk)

